

Observer

An electronic device installed in a building to locate any BLE device



Messages sent from client application can be displayed. In case of an alarm, location where it has occurred is shown.

Locator

A BLE device worn by a person



Locator is always sending short advertisement messages, which are intercepted by observers and forwarded to main server.

Observers are connected to main server via Ethernet



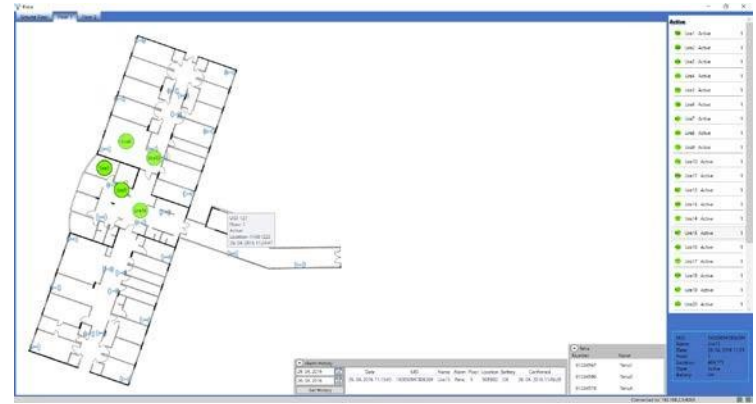
Server application

Server is running an application which calculates exact locator position.

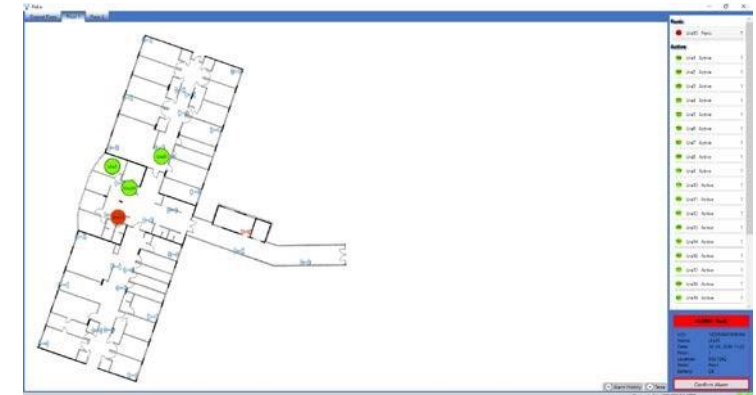


Server is connected to client applications via Ethernet

- User application displaying normal operation and alarm status:



Normal operation



Alarm status

Client application

Client application is a graphical user interface, where user can see all current locator positions. And when an alarm occurs it is immediately shown in map view and a sound alarm goes off.